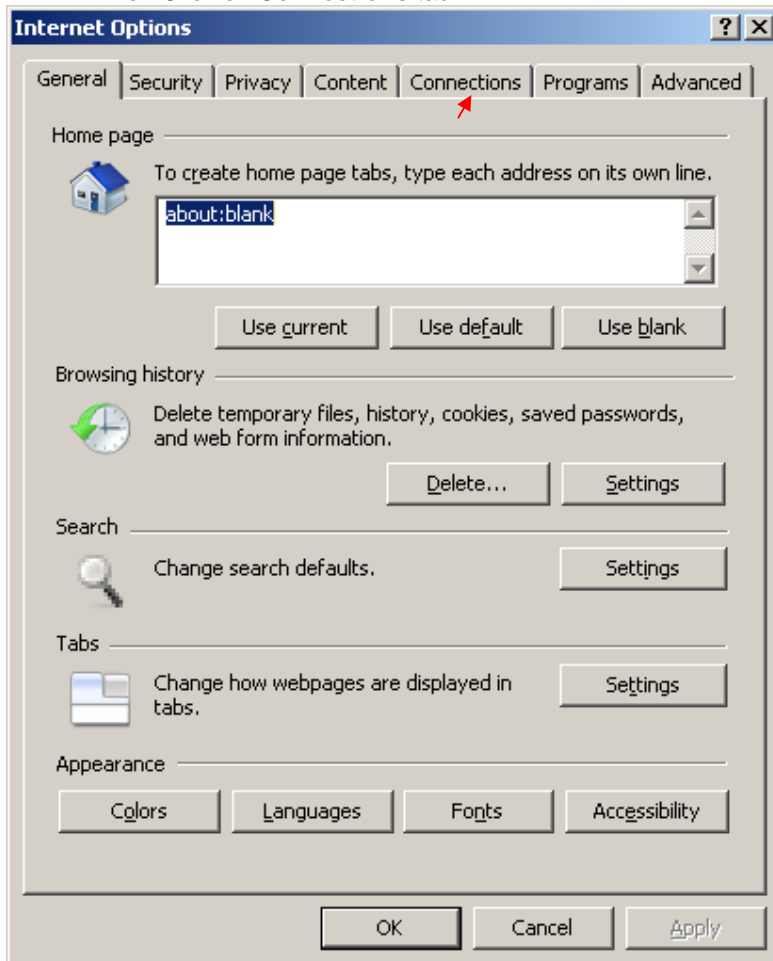


SPARK THROUGH KSWAN CONNECTION

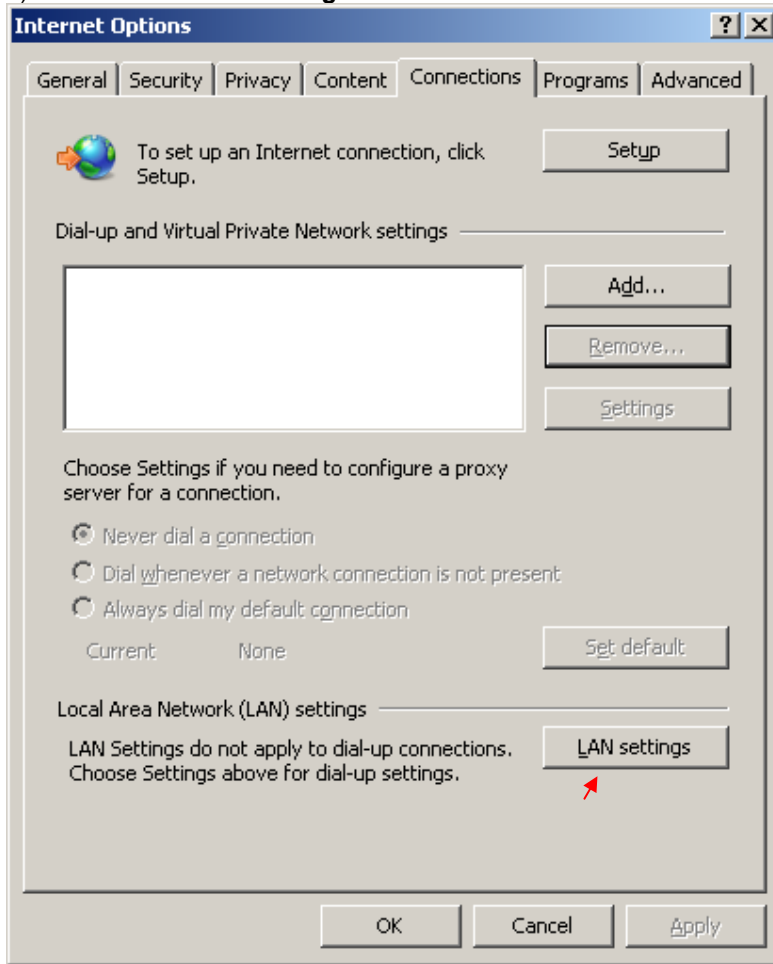
INTERNET BROWSER CONFIGURATION

Microsoft Internet Explorer

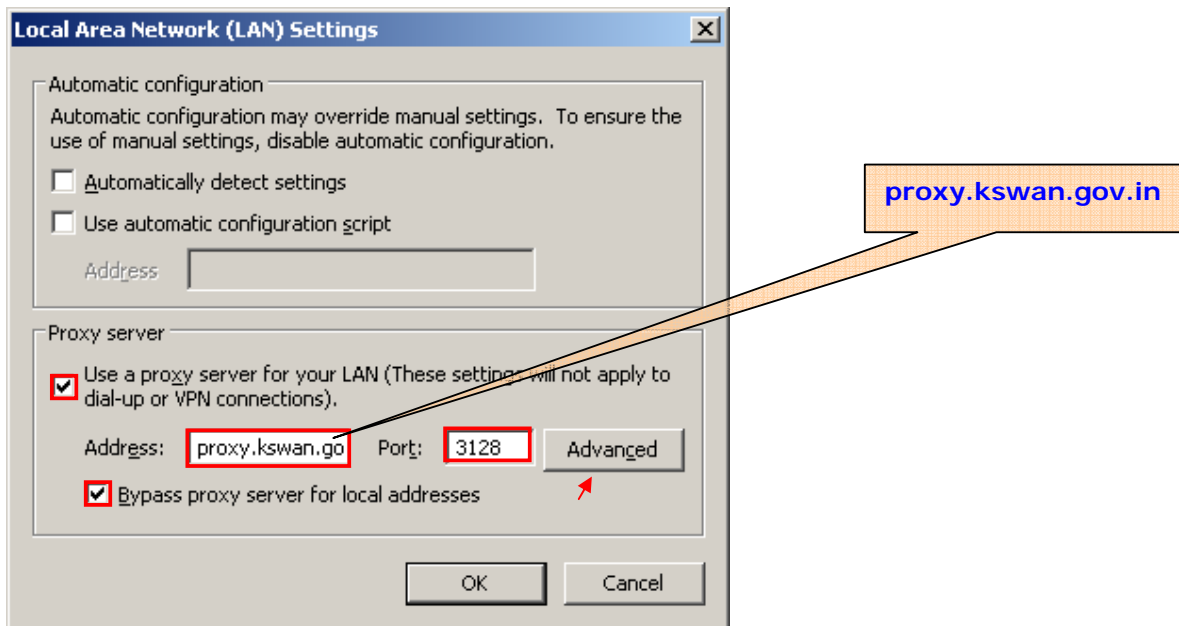
- 1) Open Internet Explorer and select **Tools** → **Internet Options**.
Then Click on **Connections** tab



2) Click on **LAN Settings**



3) Fill the LAN Settings form as displayed below and click on **Advanced** button



3) Fill the Proxy Settings form as displayed below and click on **OK** button to Save & Exit

The image shows a 'Proxy Settings' dialog box with the following configuration:

Type	Proxy address to use	Port
HTTP:	proxy.kswan.gov.in	3128
Secure:	proxy.kswan.gov.in	3128
FTP:	proxy.kswan.gov.in	3128
Socks:		

Use the same proxy server for all protocols

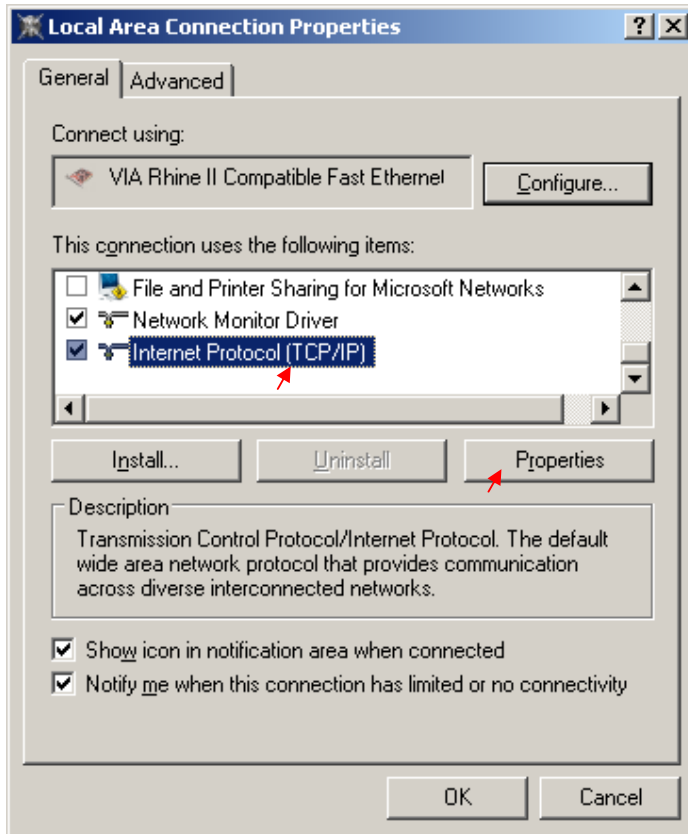
Exceptions
Do not use proxy server for addresses beginning with:
spark.gov.in;www.spark.gov.in

Use semicolons (;) to separate entries.

Buttons: OK, Cancel

DNS Server Settings

- 1) Open **Control Panel** from **Start** → **Settings**
- 2) Open **Network Connections**
- 3) Right click on **Local Area Connection** and Select **Properties**
- 4) Select **Internet Protocol (TCP/IP)** and click on **Properties**



- 5) Click on **Use the following DNS server addresses** and Fill the **preferred DNS server** and **Alternate DNS server** fields as shown below;

The screenshot shows the 'Internet Protocol (TCP/IP) Properties' dialog box. The 'General' tab is active. The 'Use the following DNS server addresses' radio button is selected and circled in red. The Preferred DNS server is 10.1.6.19 and the Alternate DNS server is 10.1.6.16, both also circled in red. The IP address is 10.1.1.2, the Subnet mask is 255.255.255.0, and the Default gateway is 10.1.1.1. The 'Advanced...' button is visible at the bottom right. The 'OK' and 'Cancel' buttons are at the bottom center.

- 6) Click **OK** to Save & Exit the settings