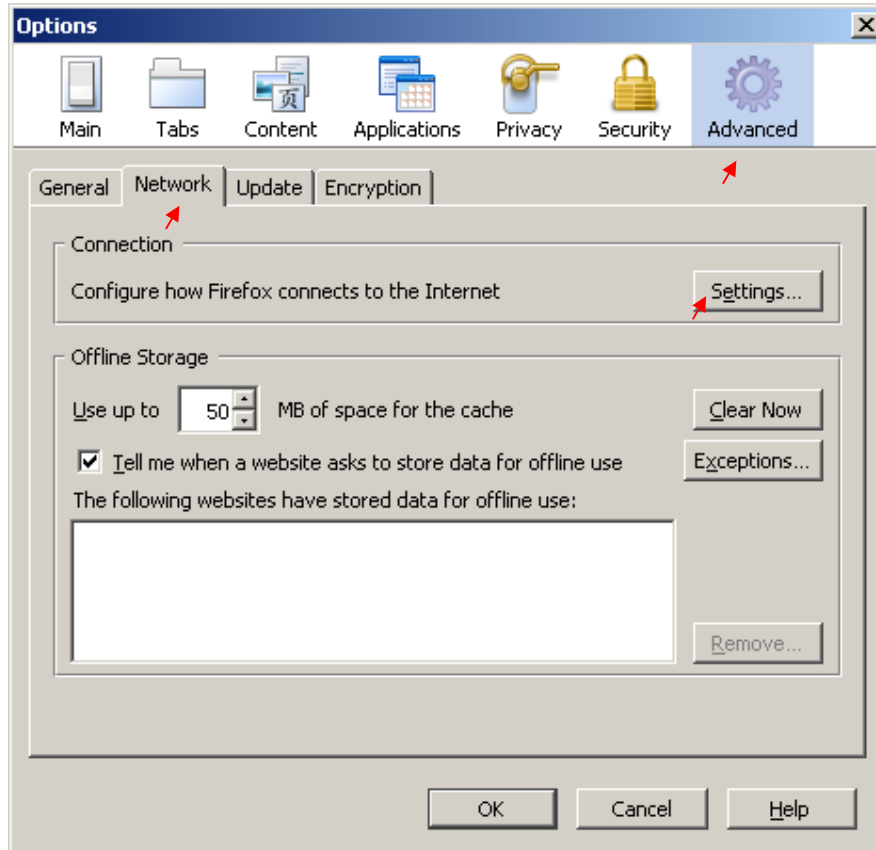


SPARK THROUGH KSWAN CONNECTION

INTERNET BROWSER CONFIGURATION

Mozilla Firefox

- 1) Open Mozilla Firefox and select **Tools → Options**.
Then Click on **Advanced** tab. Then click on Network tab and then Settings button



2) Click on **LAN Settings** and fill the Form as displayed below;

The screenshot shows the 'Connection Settings' dialog box with the 'Manual proxy configuration' option selected. The 'HTTP Proxy' field is set to 'proxy.kswan.gov.in' and the 'Port' is set to '3128'. The checkbox 'Use this proxy server for all protocols' is checked. Other proxy fields (SSL, FTP, Gopher, SOCKS Host) are also set to 'proxy.kswan.gov.in' with port '3128'. The 'SOCKS' version is set to 'SOCKS v5'. The 'No Proxy for' field contains 'www.spark.gov.in, spark.gov.in'. The 'Automatic proxy configuration URL' field is empty. The 'OK' button is highlighted with a red arrow.

Connection Settings

Configure Proxies to Access the Internet

No proxy

Auto-detect proxy settings for this network

Manual proxy configuration:

HTTP Proxy: proxy.kswan.gov.in Port: 3128

Use this proxy server for all protocols

SSL Proxy: proxy.kswan.gov.in Port: 3128

FTP Proxy: proxy.kswan.gov.in Port: 3128

Gopher Proxy: proxy.kswan.gov.in Port: 3128

SOCKS Host: proxy.kswan.gov.in Port: 3128

SOCKS v4 SOCKS v5

No Proxy for: www.spark.gov.in, spark.gov.in
Example: .mozilla.org, .net.nz, 192.168.1.0/24

Automatic proxy configuration URL:

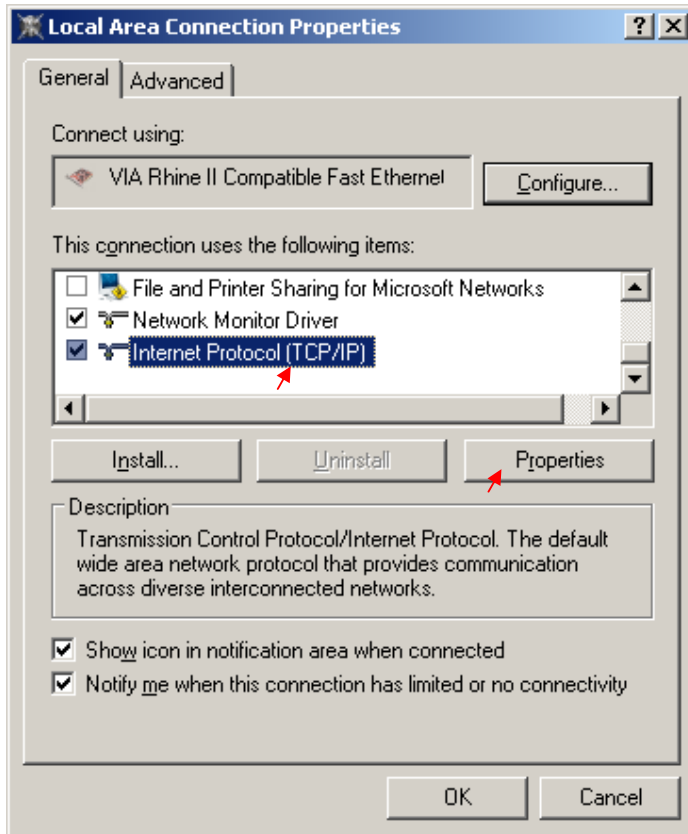
Reload

OK Cancel Help

3) Click on **OK** button to Save & Exit

DNS Server Settings

- 1) Open **Control Panel** from **Start** → **Settings**
- 2) Open **Network Connections**
- 3) Right click on **Local Area Connection** and Select **Properties**
- 4) Select **Internet Protocol (TCP/IP)** and click on **Properties**



- 5) Click on **Use the following DNS server addresses** and Fill the **preferred DNS server** and **Alternate DNS server** fields as shown below;

The screenshot shows the 'Internet Protocol (TCP/IP) Properties' dialog box. The 'General' tab is active. The text at the top reads: 'You can get IP settings assigned automatically if your network supports this capability. Otherwise, you need to ask your network administrator for the appropriate IP settings.'

There are two radio button options for IP addressing:

- Obtain an IP address automatically
- Use the following IP address:

Under the second option, there are three text boxes:

- IP address: 10 . 1 . 6 . 2
- Subnet mask: 255 . 255 . 255 . 0
- Default gateway: 10 . 1 . 6 . 254

There are two radio button options for DNS server addresses:

- Obtain DNS server address automatically
- Use the following DNS server addresses:

Under the second option, there are two text boxes:

- Preferred DNS server: 10 . 1 . 6 . 19
- Alternate DNS server: 10 . 1 . 6 . 16

At the bottom right of the dialog box, there is an 'Advanced...' button. At the very bottom, there are 'OK' and 'Cancel' buttons. The 'OK' button has a red arrow pointing to it.

- 6) Click **OK** to Save & Exit the settings